



# Fraction Blender User Guide

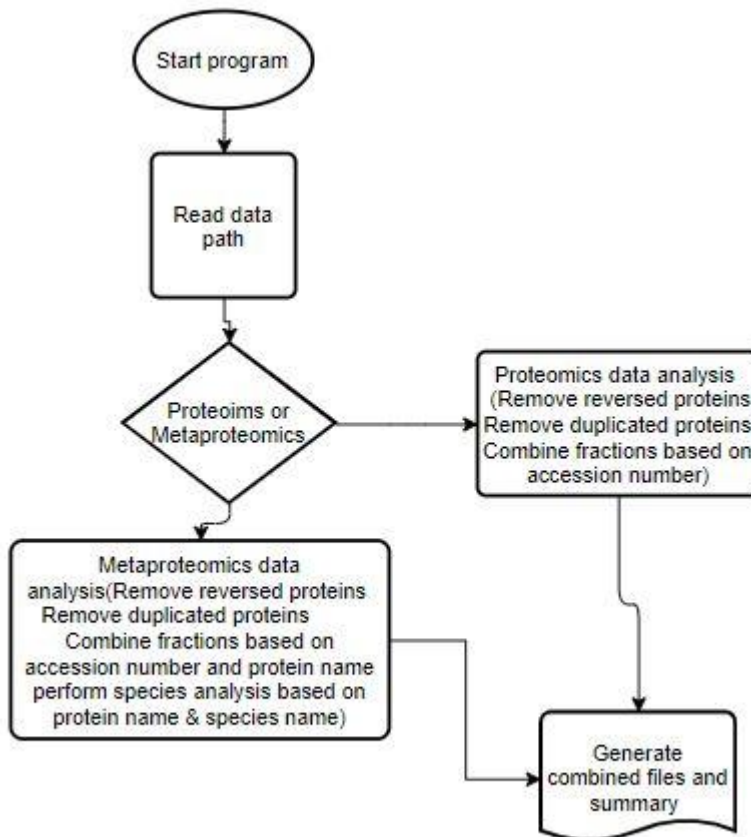
November 2019



مؤسسة مستشفى سرطان  
الأطفال - مصر  
Children's Cancer Hospital  
Foundation - Egypt

## Introduction

This document describes how to use Fraction blender version 1.0.0 software that will combine multiple columns of Excel (xlsx) based on Accession number of proteins. Blender is able to perform multi data analysis of Protein pilot output as it performs proteomics data analysis by combining multiple fractions into one fraction and report a summary for resulted files, In addition to metaproteomics data analysis in which species analysis is performed as described on the following figure



مؤسسة

pital

## Software Requirements

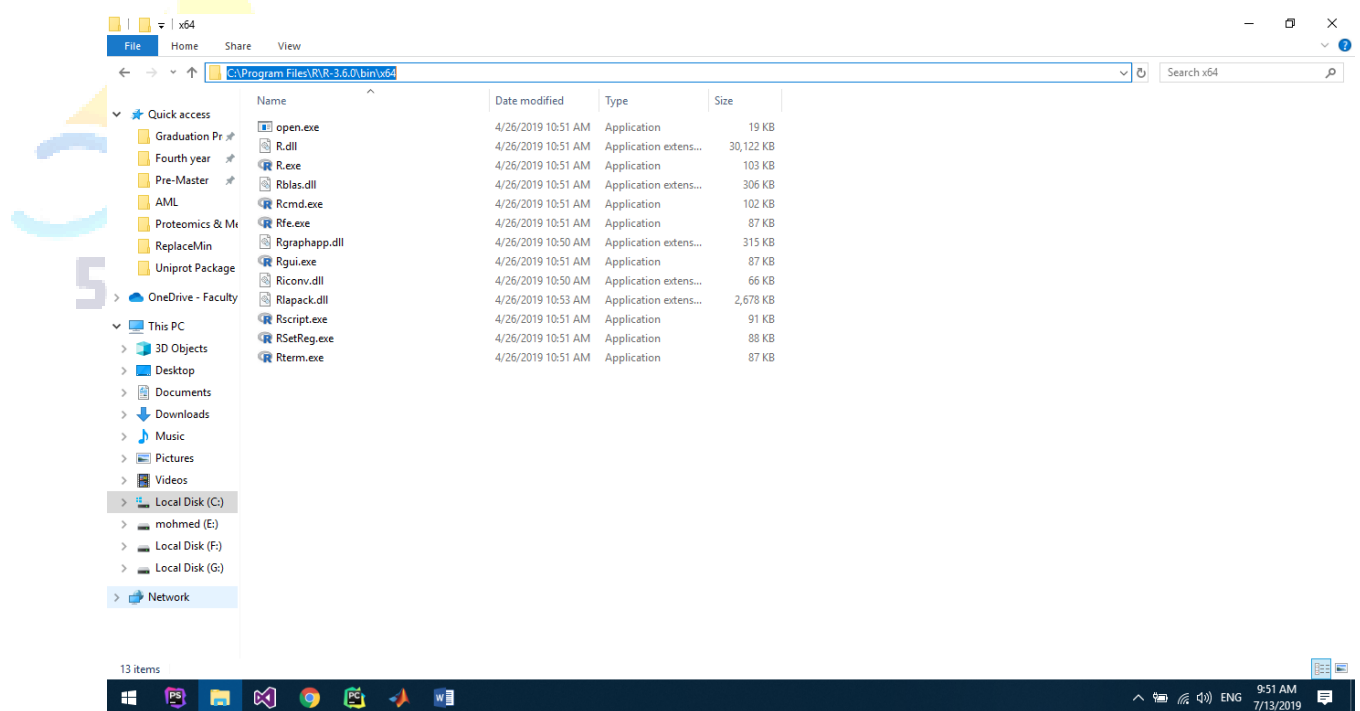
- OPERATING SYSTEM

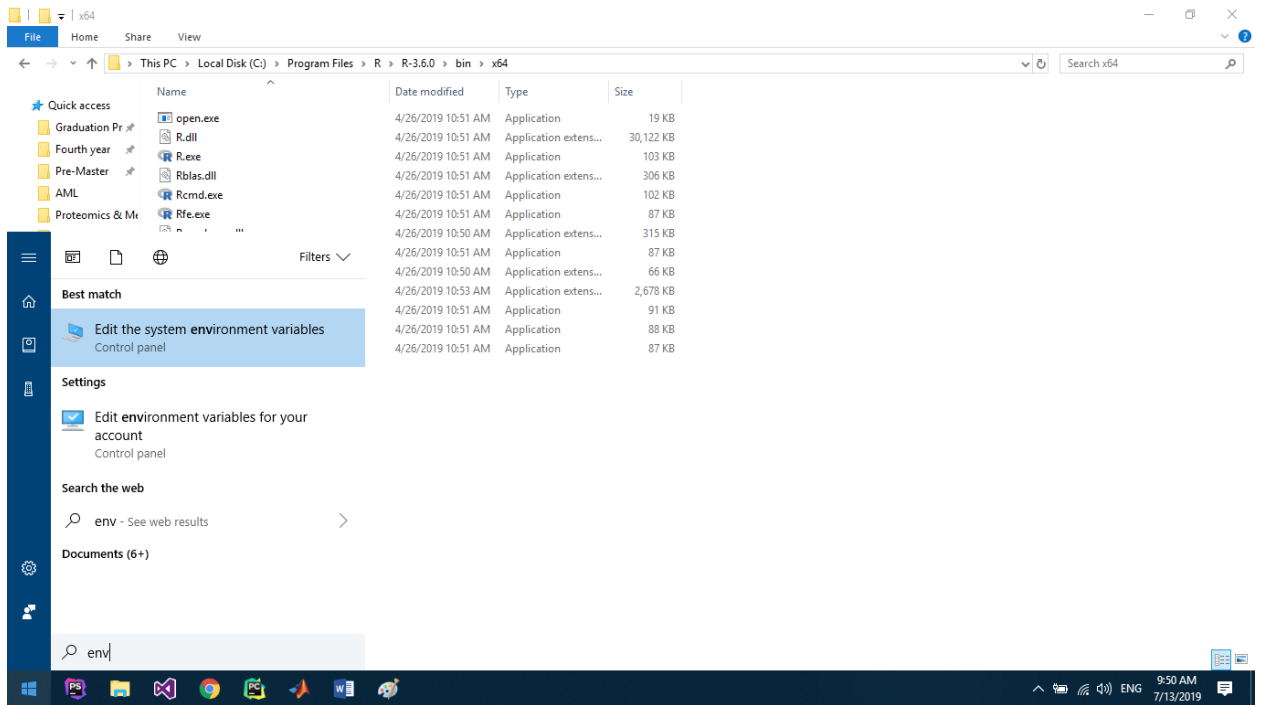
This software is compatible with Microsoft Windows XP with SP3, Windows XP Professional with SP2 64-bit system, Windows 7 SP1 64-bit system and Microsoft windows server 2008 standard.

- R programming language

## Installation

- Add Rscript path to environment variables





مؤسسة مستشفى سرطان  
الأطفال - مصر  
Children's Cancer Hospital  
Foundation - Egypt

Environment Variables

User variables for Soudy

Variable	Value
GOOGLE_APPLICATION_CRE...	C:\Users\Soudy\PycharmProjects\ObjectDetection\AIShadow-2005...
Hadoop	G:\Prog\hadoop-3.1.1\bin
HOME	C:\Users\Soudy
MOZ_PLUGIN_PATH	C:\Program Files (x86)\Foxit Software\Foxit Reader\plugins\
OneDrive	C:\Users\Soudy\OneDrive - Faculty Of Computer and Information T...
OneDriveCommercial	C:\Users\Soudy\OneDrive - Faculty Of Computer and Information T...
Path	C:\Users\Soudy\AppData\Local\Microsoft\WindowsApps:C:\Users\...

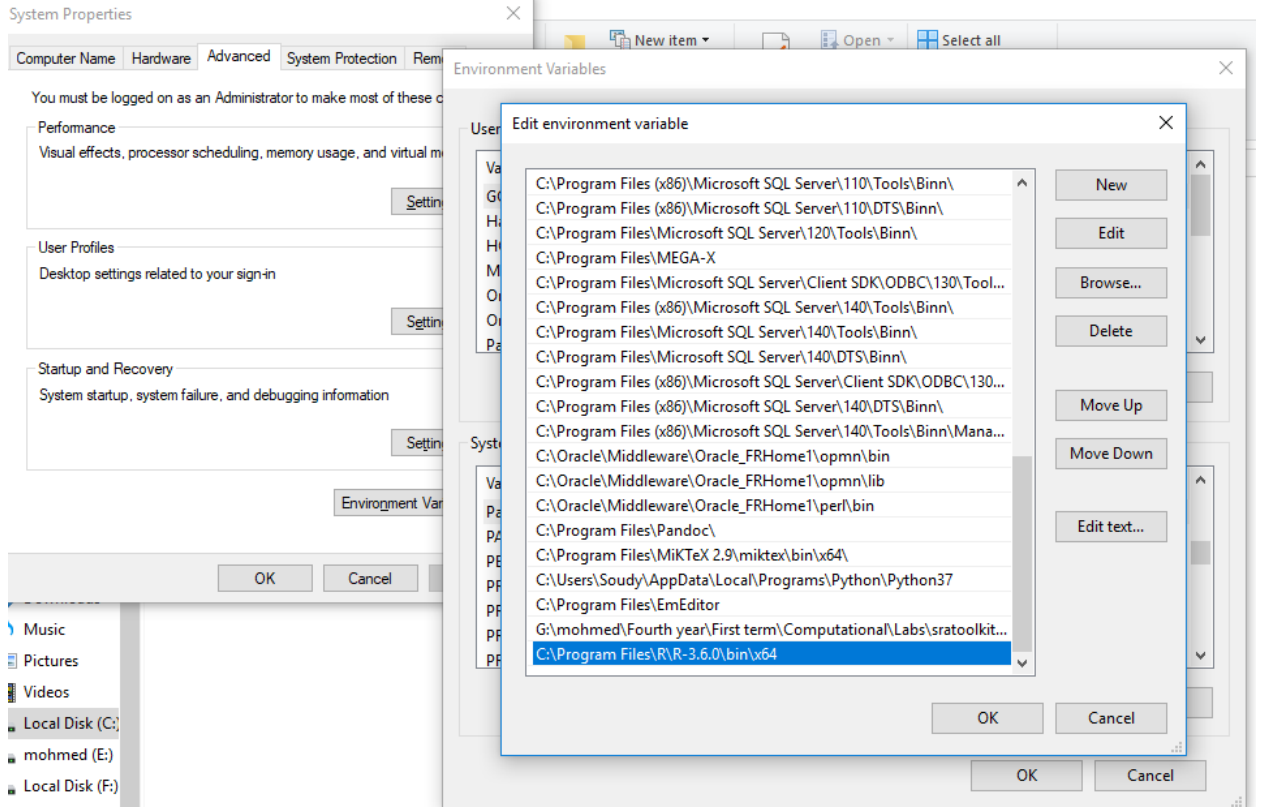
New... Edit... Delete

System variables

Variable	Value
Path	G:\app\Soudy\product\11.2.0\client_1;G:\app\Soudy\product\11.2....
PATHEXT	.COM;.EXE;.BAT;.CMD;.VBS;.VBE;.JS;.JSE;.WSF;.WSH;.MSC
PERL5LIB	
PROCESSOR_ARCHITECTURE	AMD64
PROCESSOR_IDENTIFIER	Intel64 Family 6 Model 69 Stepping 1, GenuineIntel
PROCESSOR_LEVEL	6
PROCESSOR_REVISION	4501

New... Edit... Delete

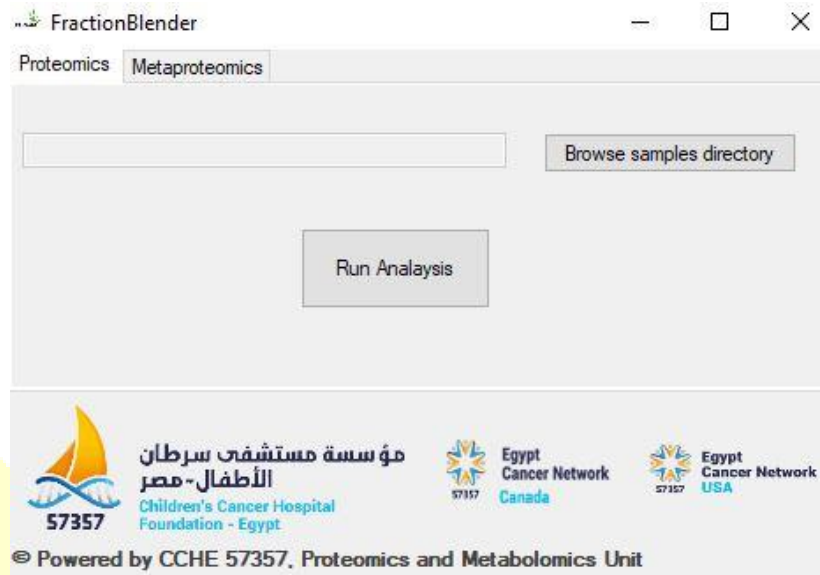
OK Cancel



مؤسسة مستشفى سرطان الأطفال  
الأطفال - مصر  
Children's Cancer Hospital  
Foundation - Egypt

## Graphical user interface

1. A window with two tabs will appear a tab for proteomics data analysis and the other tab for Metaproteomics data analysis.



2. User will be asked to enter path of directory containing sub-directories containing reports to be combined.
3. Companion will combine files within the same sub-directory into one file based on user-defined selections.
4. Once process is finished software will show message done.